


File: X51005447851.png SHA-256: f39fb23d4df82ccf... Size: 928x1771 px Analysed: 2026-05-12 01:13:35 UTC Model: FraudX v2-multi (ResNet-18, ep13, thr=0.08)



VERDICT — High risk

Likely forged

Multiple regions show strong evidence of editing.

95%
CNN forgery confidence

Patch CNN: High risk **VAT QR: No QR**
forgery confidence 95% no ZATCA QR detected

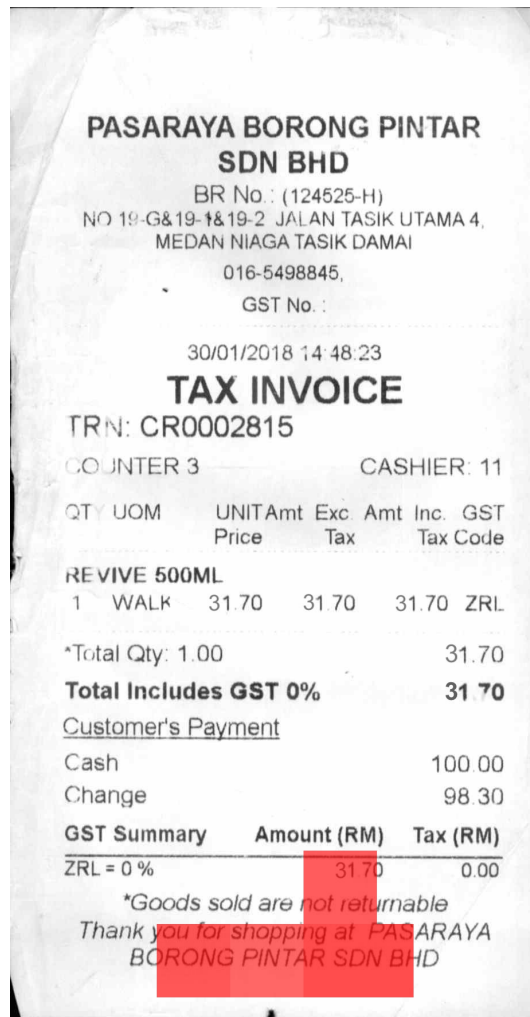
Key findings

- Multiple regions show strong evidence of editing.
- Showing the top 5 highest-confidence regions (highest score 100%). 76 of 263 text-bearing regions exceeded the model's threshold overall.
- Edit type predicted across the top 5 regions: 5 × copy-paste edits.
- Targeted fields: 2 × other fields and 1 × Date / store metadata.
- This file is an exact duplicate of one already analysed in this session.

VAT QR check

No ZATCA-format VAT QR detected on this receipt.

Document with suspicion heatmap (red = CNN-flagged)



Top suspicious regions

Each thumbnail is the 128x128 patch fed to the CNN, with its score and predicted edit type / field.

<p>1</p> <p>at PAS SDN BHD</p> <p>100%</p> <p>CPI</p> <p>Other</p>	<p>2</p> <p>ng at F R SDN</p> <p>100%</p> <p>CPI</p> <p>Metadata</p>	<p>3</p> <p>ou for ORONG</p> <p>95%</p> <p>CPI</p> <p>Company</p>	<p>4</p> <p>31.70 not retu</p> <p>92%</p> <p>CPI</p> <p>Product</p>	<p>5</p> <p>shoppi PINTA</p> <p>86%</p> <p>CPI</p> <p>Other</p>
--	--	---	---	---

Approach

ResNet-18 patch classifier (128x128, stride 64) trained on FINDIT2 (Tornes et al., ICDAR 2023). Two auxiliary heads classify the modification technique and the document field affected; the binary backbone is frozen so the headline patch precision (92.25%) is preserved while adding explainability. The image-level fraud score is the top-k mean of patch probabilities over text-bearing regions only (edge density ≥ 0.02). The Saudi VAT QR check validates the ZATCA Phase-1 TLV format and cross-checks the QR's declared totals against pytesseract OCR of the printed receipt body.

Reported numbers vs paper

METRIC	OURS	PAPER
Patch precision	92.25% (this work)	79.41% (paper OH-JPEG)
Patch F1 / AUC	91.79 / 0.97	—
Image-level F1 (top-k)	29.66	28.39 (paper ChatGPT-relaxed)
Mod head test acc	CPI 73 · CUT 100 · IMI 38 · PIX 55 · Other 14	
Entity head test acc	Total/payment 67 · Metadata 47 · Product 27 · Company 24	

Raw model output

- Patches scored: 378 Text-rich: 263 Flagged ≥ 0.08 : 76
- Top-k mean fraud score: 0.9458 CNN risk: HIGH Duplicate: 1.00 (exact_duplicate)
- Patch CNN flagged 76 of 263 text-rich patches (top score 1.00).
- Top 5 suspicious regions clustered around image coordinates (576,1600), (512,1600), (256,1600), (512,1472), (384,1600).
- Predicted modification mix across top regions: 5x CPI.
- Predicted entity types: 2x Other, 1x Metadata, 1x Company, 1x Product.
- Document is an EXACT duplicate of a file already analysed in this session (resubmission).